



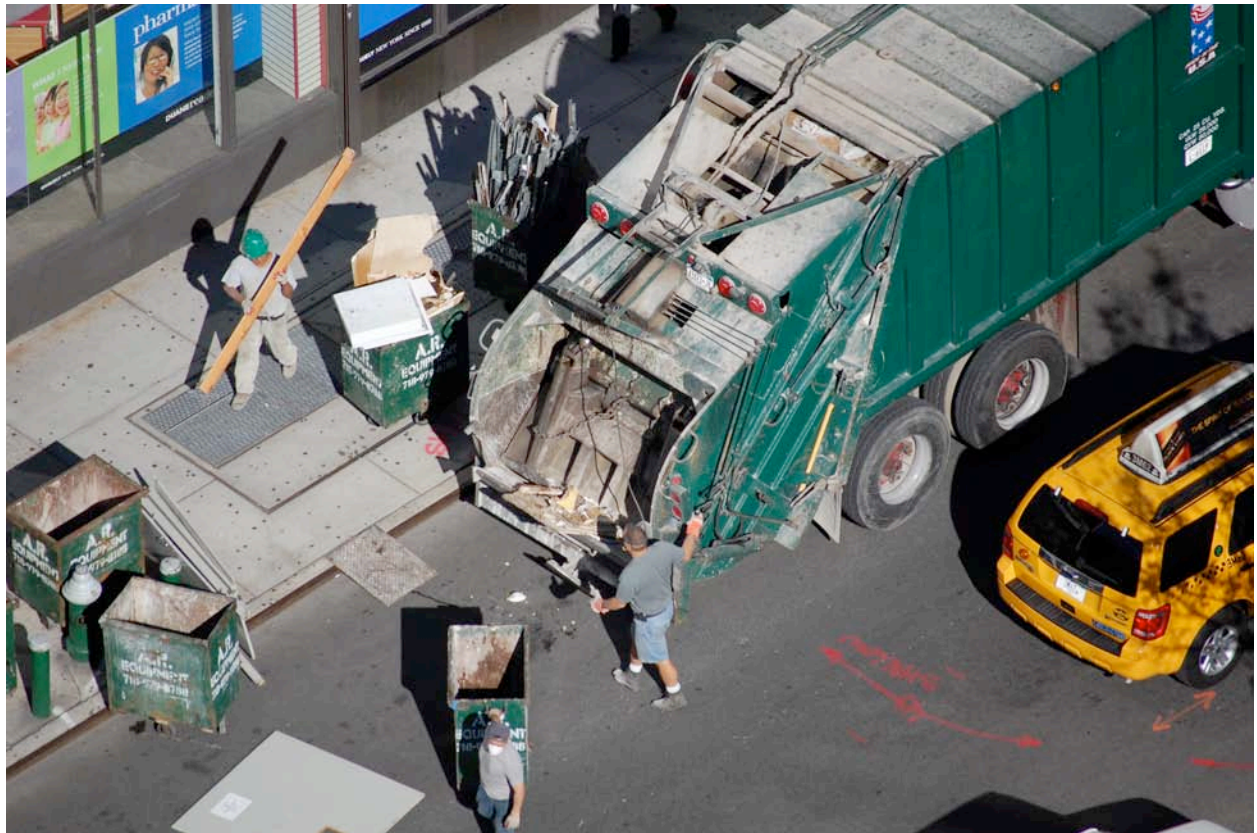


This landscape shows threatening and rugged mountains wherein the human figures are almost inconsequential. Yet Li Yin's inscription indicates that he has depicted the northern and southern cliff routes by which travelers can traverse the obstacles in their path. He also tells us that never having seen these gorges presented no hindrance in depicting them, as he had seen them in a dream and such a landscape could easily exist somewhere in the vastness of the universe.

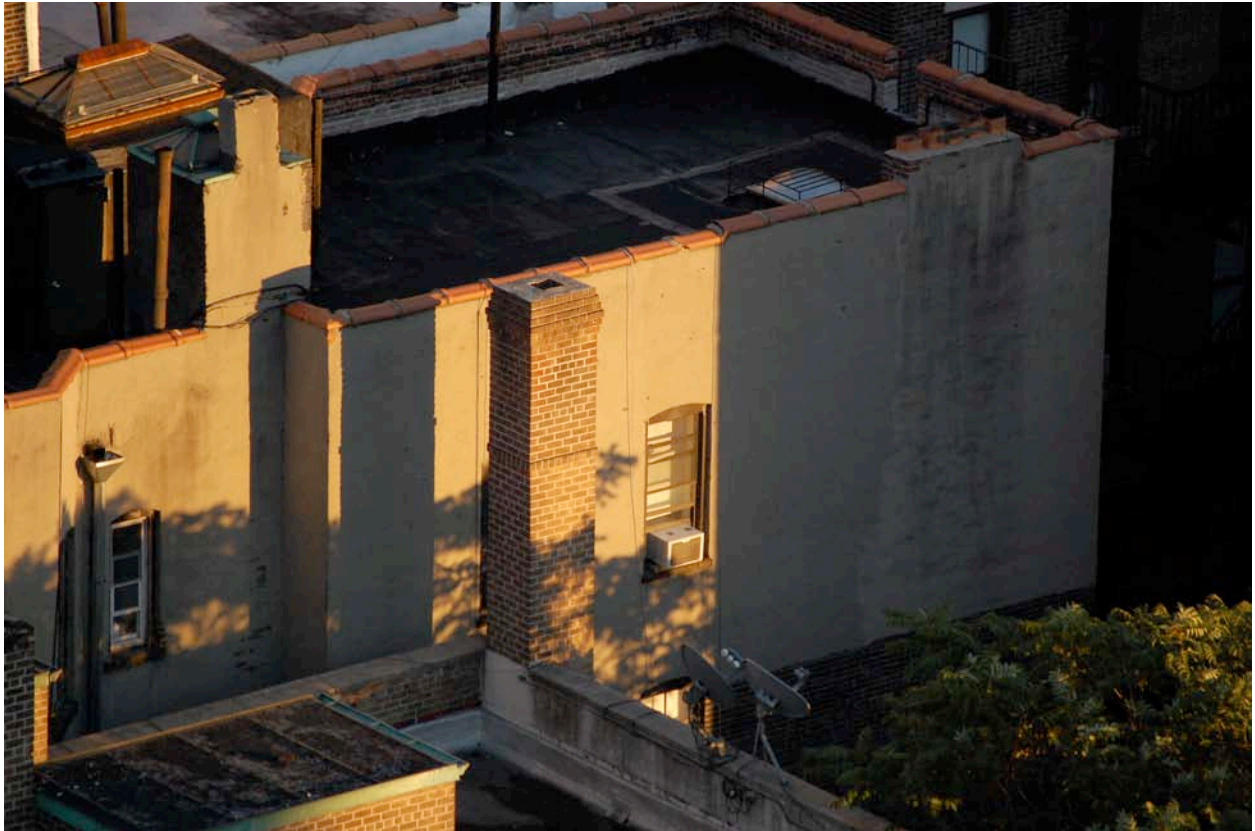
—Commentary on a painting by Li Yin dated 1698 in R.L. Wing, *The Illustrated I Ching*

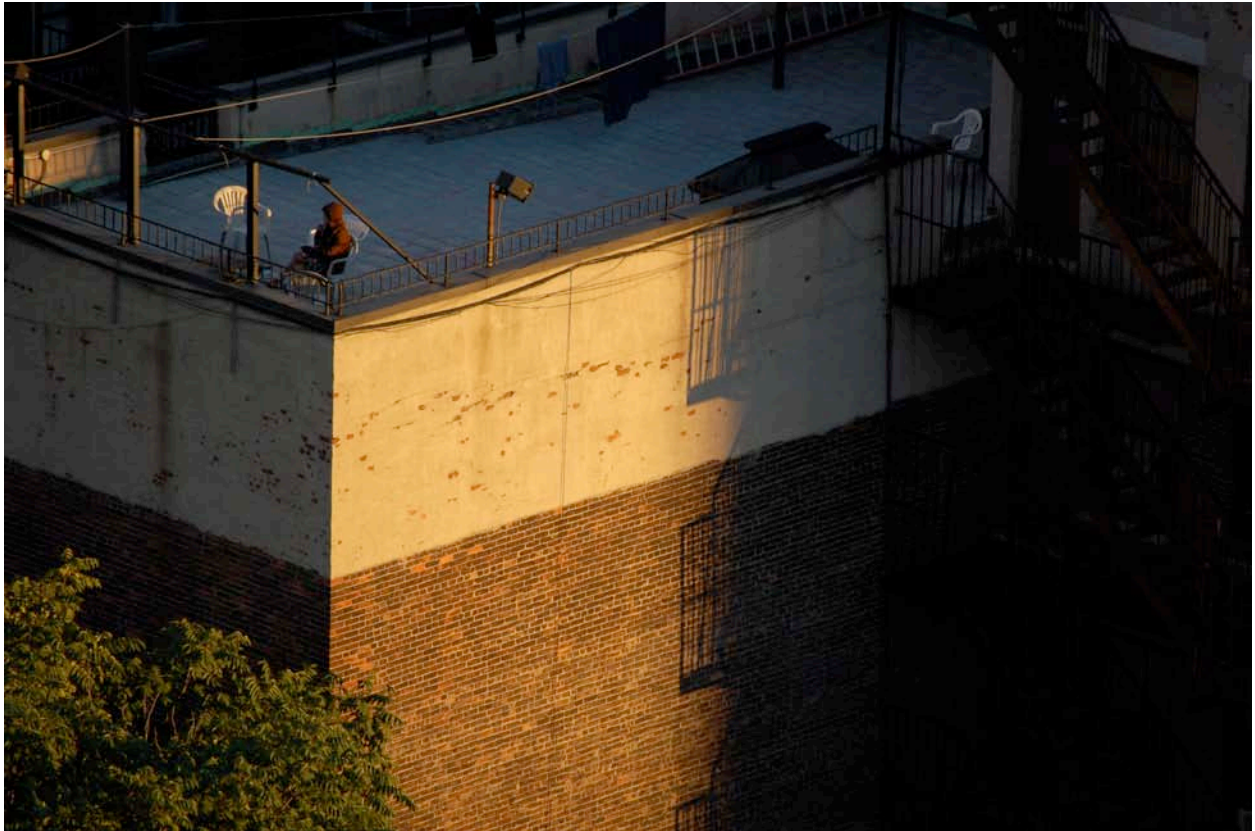










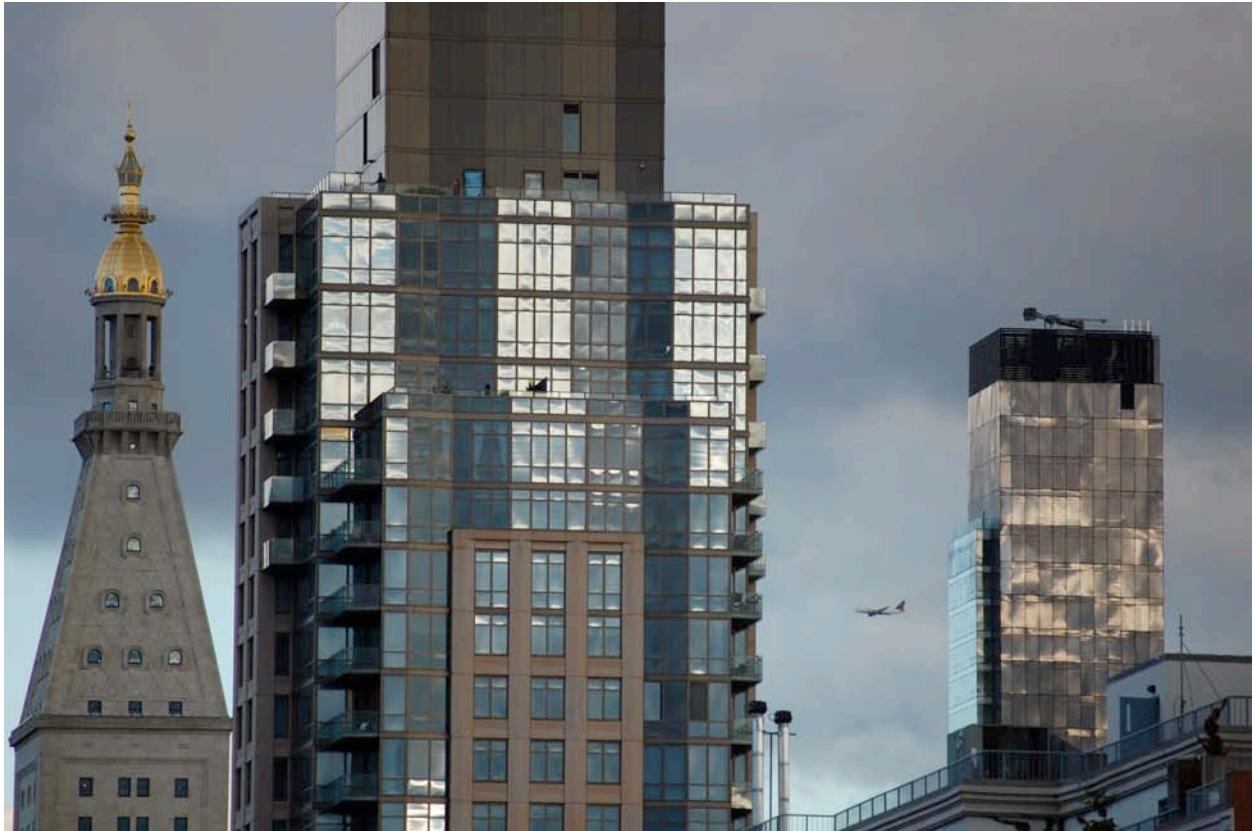












I cannot fix my object;
'tis always tottering and reeling by natural giddiness.
I take it as it is at the instant I consider it.
I do not paint its being,
I paint its passage.
—Montaigne









You've a spring in your step. Yet it's fall.

